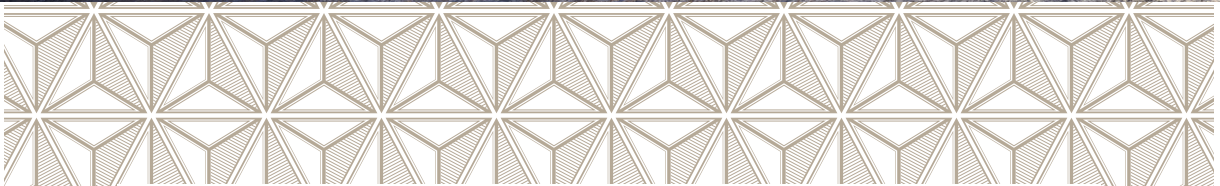
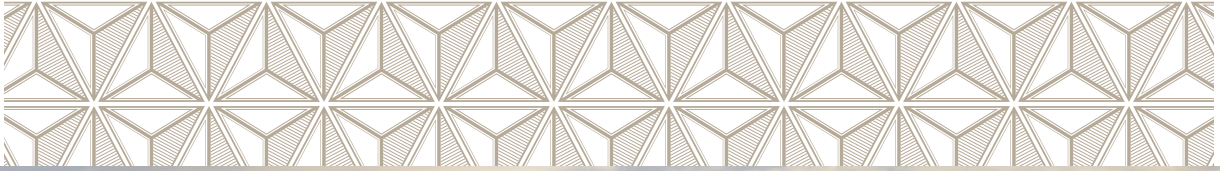


THE PENINSULA

I S T A N B U L



MEETINGS AND EVENTS

The Peninsula Istanbul



Garden

THE HOTEL

Set amid lush and expansive gardens fronting the Bosphorus – the convergence point of East and West in Türkiye’s most cosmopolitan city – The Peninsula Istanbul showcases both the vibrancy of Turkish culture and the peerless hospitality of The Peninsula Hotels. The hotel comprises a quartet of graceful waterfront buildings, three of which are protected historical landmarks dating to the early 20th century in Istanbul’s historic Karaköy district. Anchoring Galataport, a new waterfront revitalisation project to include a promenade, museums, art galleries, restaurants, boutiques and a cruise-

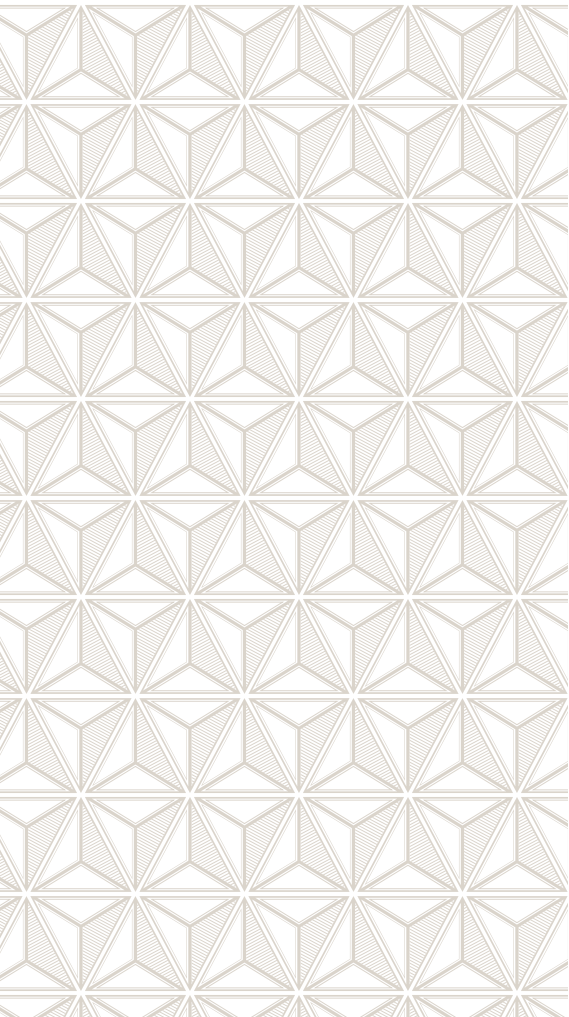
ship port, the hotel is near many of the city’s most iconic landmarks, including Galata Tower, Galata Bridge, the Hagia Sophia Grand Mosque, and The Blue Mosque.

ACCOMMODATIONS

The Peninsula Istanbul’s 177 elegantly appointed accommodations includes 138 guest rooms and 39 lavish suites, many provide sweeping views over the water from floor-to-ceiling windows, balconies, and private terraces; others include direct access to the hotel’s magnificent gardens, outdoor pool, private boat dock, and stylish restaurants and bars. All have been decorated with bespoke furnishings, modern

interpretations of Turkish design elements like wood-and-mother-of-pearl inlay and kilim-style carpets, and sumptuous baths clad in Marmara marble.

Premium stay options include The Art Suite, filled with exquisite original works of Turkish art that evoke the ambiance of a private gallery; and The Rooftop Garden Suite, whose spacious roof terrace provides panoramic vistas across the Bosphorus and the city. The hotel’s most opulent choice, The Peninsula Suite, features its own hammam, gym, screening room, glass-walled solarium, and rooftop pool. At nearly 510 square metres (5,500 square feet), it is one of the largest luxury hotel suites in the city.



VENUES THAT IMPRESS AND INSPIRE

Lavishly appointed gathering spaces ensure that both festive and business occasions make an indelible impression at The Peninsula Istanbul. Each of the hotel's stunning venues – enhanced by cutting-edge technology, world-class cuisine, and incomparable service – is attended to by the hotel's dedicated team of event planners.

CLASSIC SOPHISTICATION, STATE-OF-THE-ART TECHNOLOGY

The hotel's collection of sophisticated gathering spaces – ranging from the opulent Yali Ballroom to two intimate meeting rooms to grand open-air terraces and gardens – all come equipped with the latest audiovisual technology, such as surround-

sound audio and high-definition video conferencing. The attentive service of The Peninsula Istanbul staff ensures all high-tech components function optimally.

EXQUISITE FOOD AND BEVERAGE OFFERINGS

The Peninsula Istanbul's renowned culinary team provides exquisite globally-inspired cuisine and libations to suit all manner of events. Menus for sumptuous Turkish, Asian and International banquets, sophisticated business lunches and dinners, and artisanal cocktails can all be customised to suit individual preferences and served in a variety of formats.



Liman Room/Deniz Room



Yalı Ballroom Terrace

VENUES

Yalı Ballroom

Opulent • Sweeping Waterfront Terrace

The hotel's most palatial formal venue, The Yalı Ballroom provides a striking and unforgettable setting for grand events. Soaring over 6-metre (20-foot) high ceilings, intricately patterned kilim inspired carpets and sculptural modern chandeliers, this venue boasts an entire wall of glass doors opening onto an expansive, Bosphorus-front private terrace surrounded by gardens and shaded by Medina umbrellas. When combined, the indoor and outdoor spaces can accommodate up to 820 seated guests and 1550 guests for cocktail party. Outfitted with audiovisual technology including motorised projector screens, the venue also offers an adjacent pre-function room, with dedicated elevators to both guest room floors and a VIP car-arrival area.

Liman Room & Deniz Room

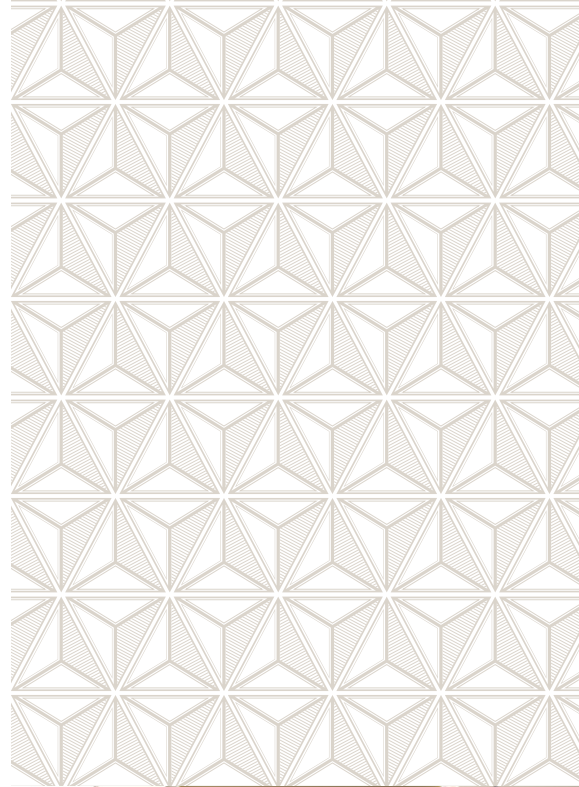
Sophisticated • Versatile

Floor-to-ceiling windows that overlook the same dramatic Bosphorus views and Turkish design elements as the Yalı Ballroom, these two smaller event venues are ideal for refined celebrations or conferences of up to 65 guests each. Both feature leading-edge audiovisual equipment, including built-in video screens, projectors, and surround-sound speaker systems; and can be adapted for a variety of seating configurations.

Yakamoz Garden

Alfresco • Waterfront

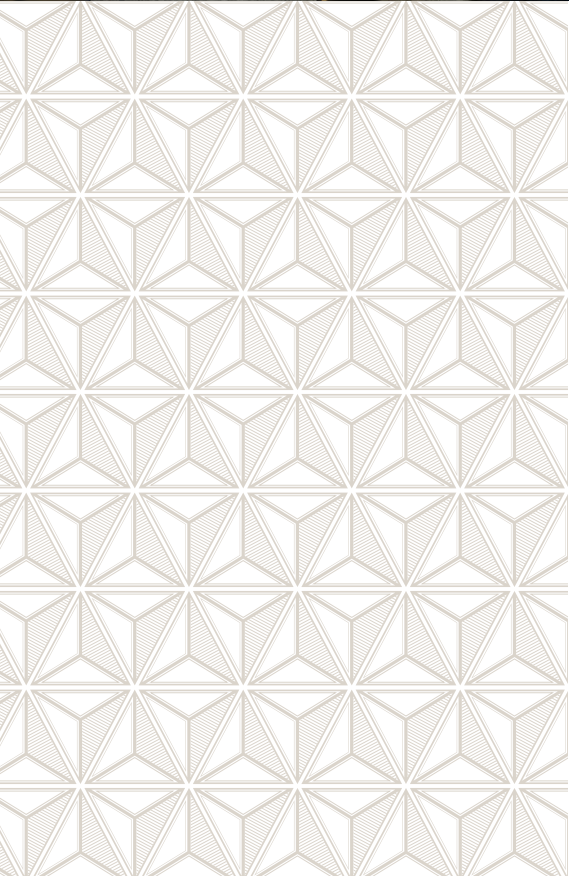
Fronting one of the hotel's restored heritage buildings and immediately alongside the Bosphorus, Yakamoz Garden offers a stunning alfresco venue for open-air parties and functions of up to 100 guests. The venue is surrounded by verdant juniper, flowering crepe myrtle, and fragrant magnolia trees. Direct access to three ground-floor guest rooms as well as the hotel's private yacht dock are also available.



Yalı Ballroom



Garden



The Herb Garden

Rooftop • Exclusive

A uniquely atmospheric event space for nature lovers is The Peninsula Istanbul's magnificent rooftop produce and herb garden. Intimate, small-group meals for up to 25 guests can be arranged at the Chef's Table, using fresh herbs, fruits, and vegetables grown on site, which also supply the hotel's restaurants; cocktails for up to 80 can also be served amid the garden's grape vines, berry bushes, and pomegranate trees, all with unfettered views of the Bosphorus.

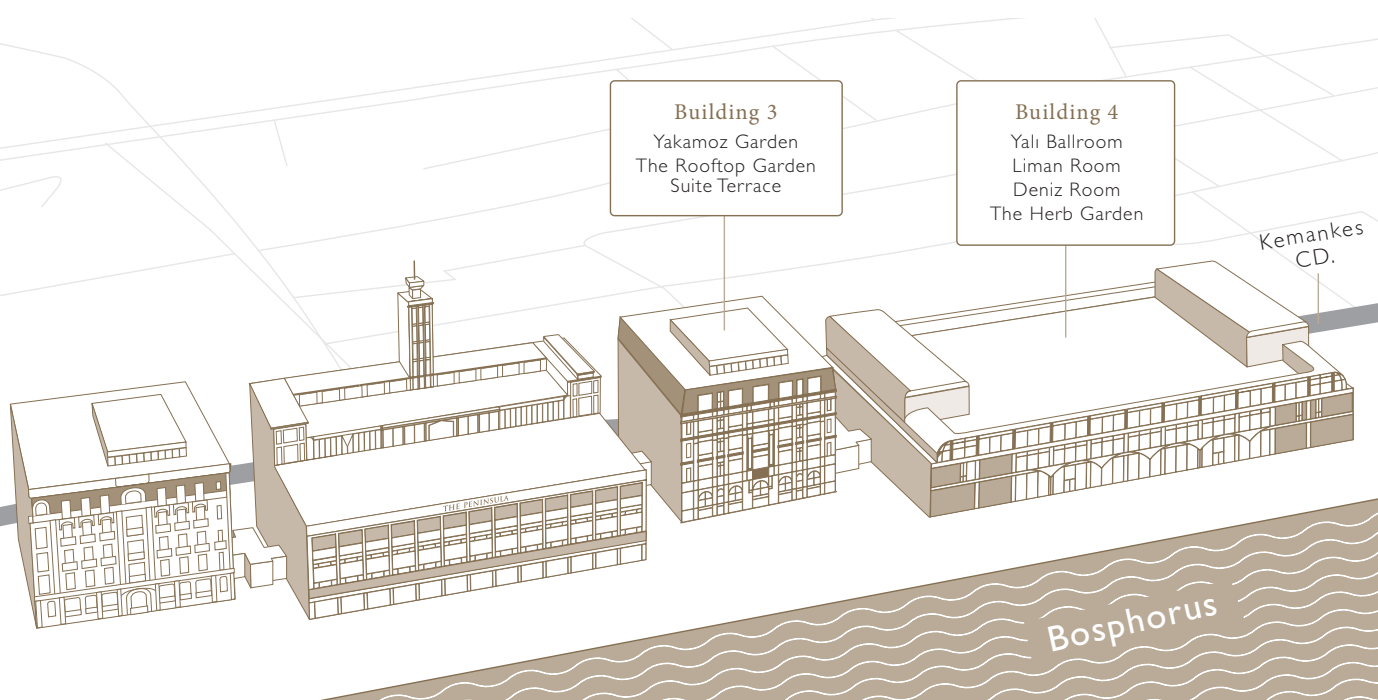
The Rooftop Garden Suite Terrace

Chic • Casual

This expansive Bosphorus-view rooftop provides a stylish setting for exclusive cocktail gatherings for up to 100 guests. The venue includes both dining tables and a luxurious lounge area with umbrella-shaded sofas and is directly accessible from ground floor by elevator.

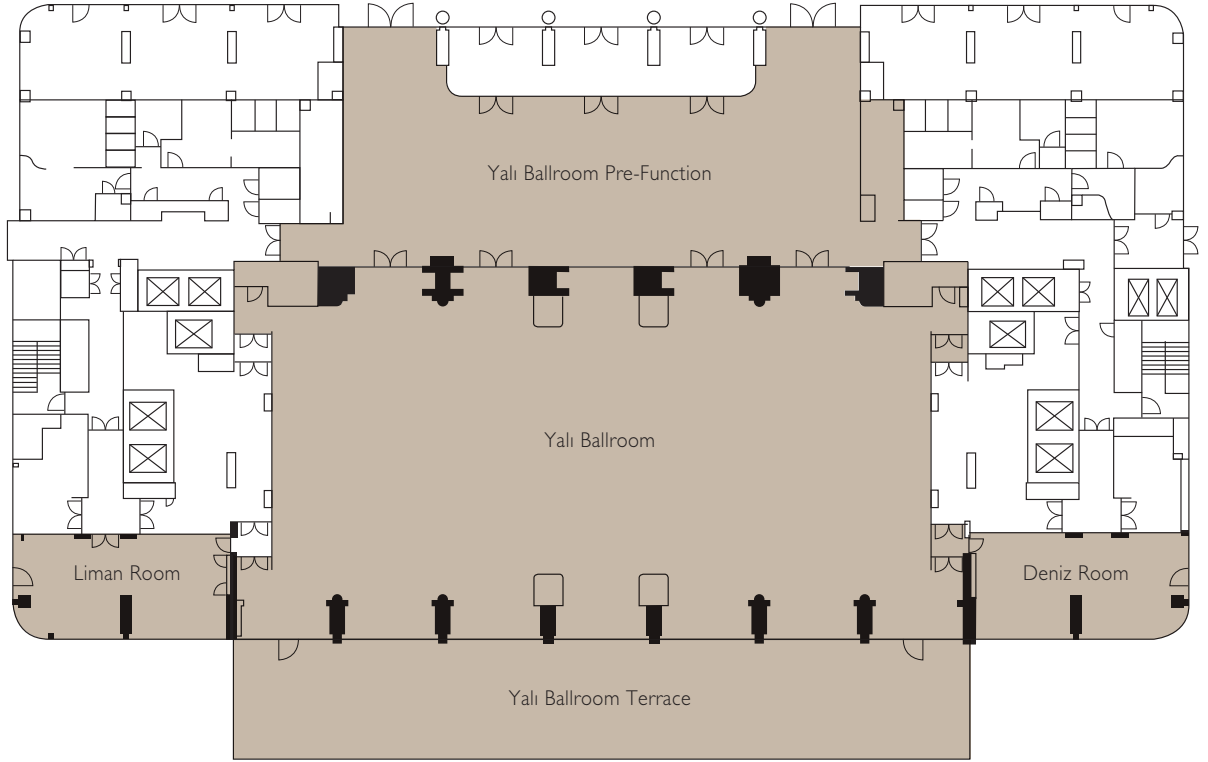
CAPACITY CHART

Venue / Location	Area		Capacity					
	Sq M	Sq Ft	Banquet	Cocktail	Theatre	Boardroom	Classroom	U-Shape
BUILDING 4								
Ground Floor								
Yalı Ballroom Pre-Function	386	4157	N/A	250	N/A	N/A	N/A	N/A
Yalı Ballroom	880	9464	470	750	550	114	300	96
Yalı Ballroom Terrace	780	8400	350	550	N/A	N/A	N/A	N/A
Liman Room	75	820	25	65	N/A	22	18	N/A
Deniz Room	75	820	25	65	N/A	22	18	N/A
3rd Floor								
The Herb Garden	N/A	N/A	25	80	N/A	N/A	N/A	N/A
BUILDING 3								
Garden								
Yakamoz Garden	128	1378	50	100	N/A	N/A	N/A	N/A
6th Floor								
The Rooftop Garden Suite Terrace	180	1938	N/A	100	N/A	N/A	N/A	N/A



FLOOR PLANS

BUILDING 4 - GROUND FLOOR



Karaköy, Kemankeş Karamustafapaşa Mahallesi, Kemankeş Caddesi No:34, 34425 Beyoğlu, İstanbul, Türkiye
+90 212 931 2888 pit@peninsula.com peninsula.com

HONG KONG · SHANGHAI · BEIJING · TOKYO · NEW YORK · CHICAGO · BEVERLY HILLS · PARIS · BANGKOK · MANILA
Under Development LONDON · ISTANBUL