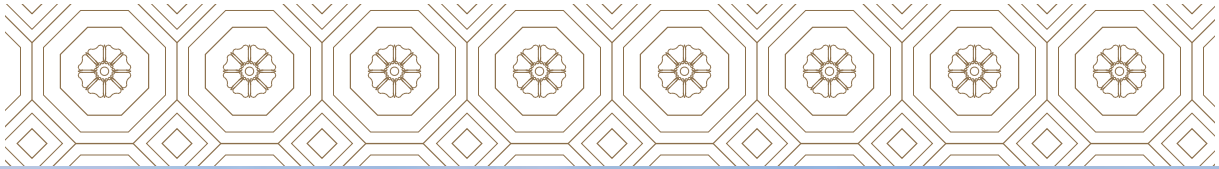


THE PENINSULA

L O N D O N



MEETINGS AND EVENTS

The Peninsula London



Aerial view of The Peninsula London

THE HOTEL

Ideally situated in the heart of Belgravia, with views overlooking Hyde Park Corner and Wellington Arch, The Peninsula London is located at one of the city's most prestigious addresses. The elegant, newly built hotel includes an expansive inner courtyard with off-street access for arriving guests, as well as 30 car parking spaces. Many of London's most iconic attractions, including Buckingham Palace, Harrods, and the Victoria and Albert Museum are just moments away. The hotel welcomes guests with impeccable design and service that reflect the cultural sophistication of its home city.

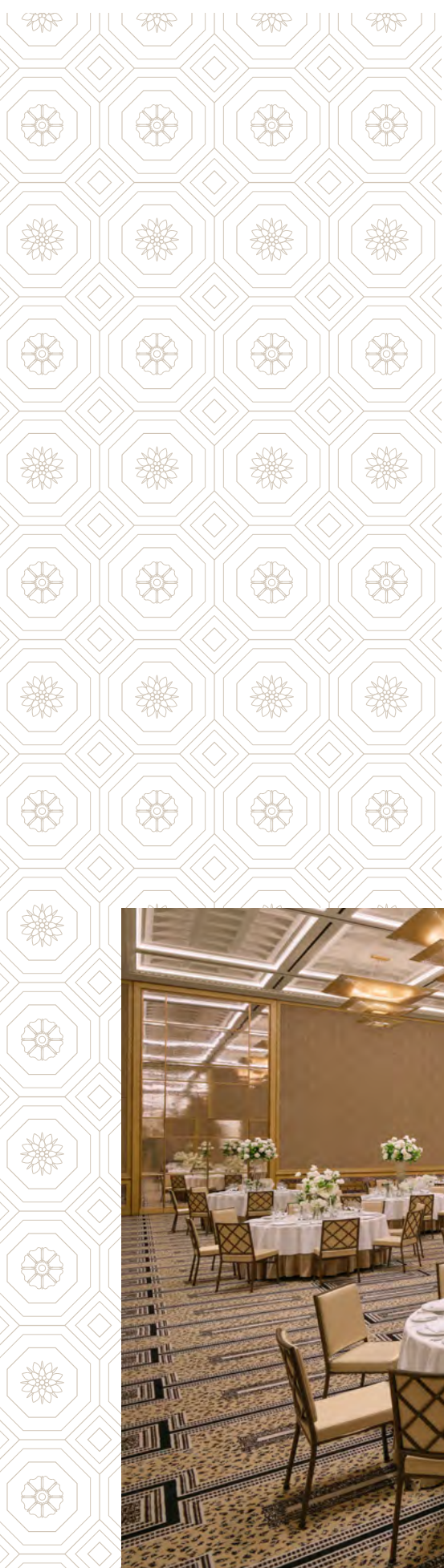
ACCOMMODATIONS

The Peninsula London's 190 exquisitely styled accommodations consist of 131 guest rooms and 59 suites. Of those 190 rooms, 23 offer spacious and comfortable interconnecting rooms and suites to accommodate family guests. Many feature floor-to-ceiling windows that offer both abundant natural light and dazzling views over London's skyline and all have been designed by architect and designer of the interiors Peter Marino to reflect the distinctive grandeur of Belgravia.

Ultimate stay options include four lavish signature suites: The Palace Suite and The Grand Terrace Suite, both with large outdoor terraces

facing Buckingham Palace and Hyde Park; and The Arch Suite, which has uninterrupted views of Wellington Arch.

The Peninsula Suite, the hotel's most palatial, includes a private screening room and fitness centre, as well as access to exclusive VIP drop-off and pick-up service at the underground car park for optimal privacy and security. The Peninsula Suite can also be interconnected with as many as seven other rooms and suites on the floor to create a sumptuous private apartment-like environment totalling nearly 1,300 square metres (14,000 square feet) – the largest in London.



VENUES THAT IMPRESS AND INSPIRE

The Peninsula London continues a proud tradition of hosting memorable business events and private celebrations, in an environment of unparalleled taste and distinction. A dedicated team helps clients to create bespoke events, ranging in scale from grand galas to intimate gatherings, and enhanced by cutting-edge technology, luxury transport, fine cuisine, and world-renowned service.

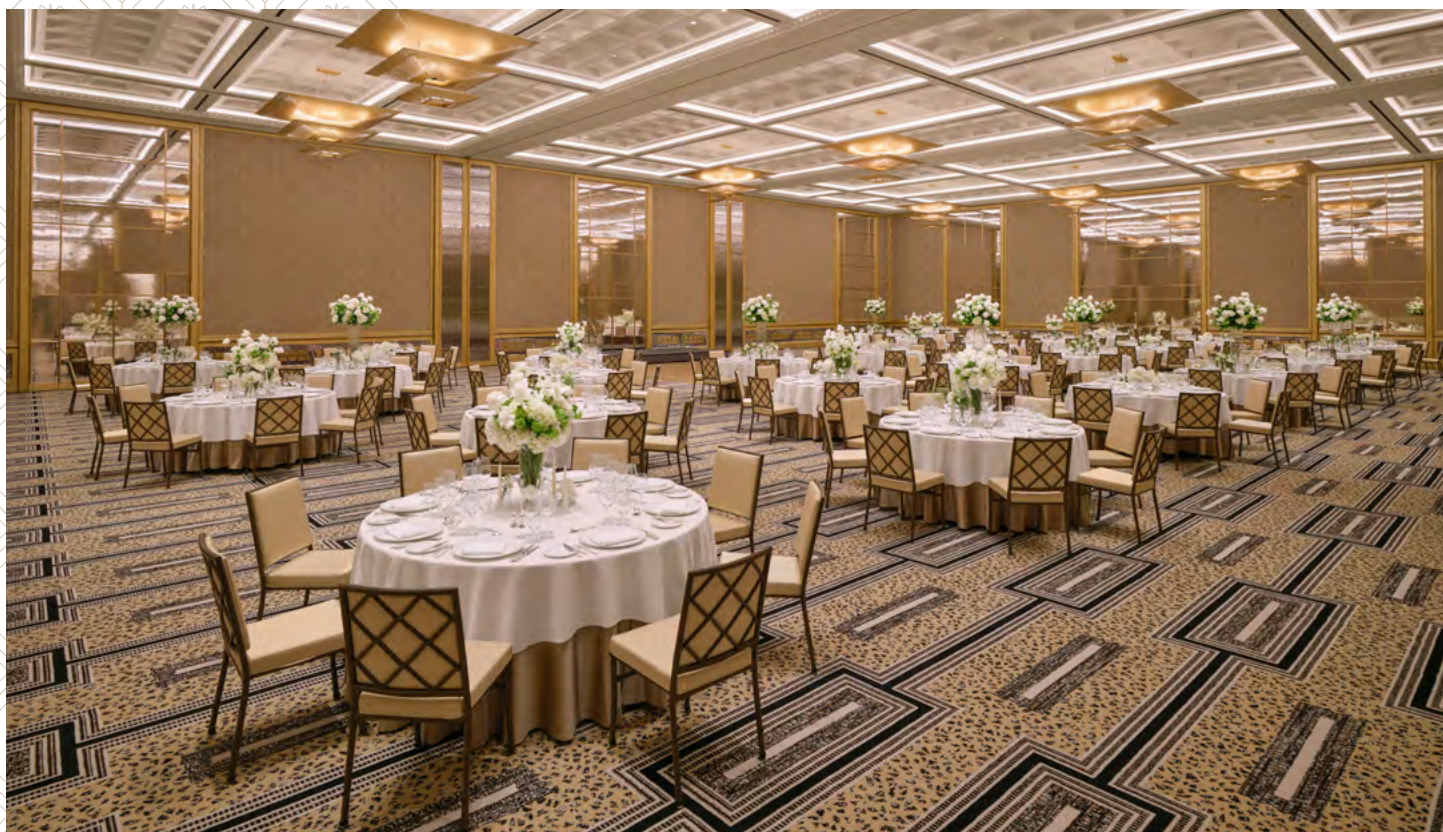
CLASSIC SOPHISTICATION, STATE-OF-THE-ART TECHNOLOGY

The Peninsula London offers six meeting rooms, a 15-seat screening room and one grand ballroom to accommodate business conferences, each with its own distinct character and functionality. All venues are soundproofed, and feature the latest audio-visual capabilities and a dedicated AV support team.

Special seating configurations and personalised coffee and meal services can also be arranged.

EXQUISITE FOOD AND BEVERAGE OFFERINGS

The Peninsula London offers lavish business lunches, banquets and dinners to suit all manner of events. Delectable British, International and Cantonese cuisine can be created for every type of event. The acclaimed international culinary team can also accommodate a variety of special requests, including halal and kosher menus.



St. George Ballroom



VENUES

St. George Ballroom

Elegant • Contemporary

Occupying a grand space with soaring over 6-metre (20-foot) high ceilings, the St. George Ballroom is a study in understated glamour. Designed by architect and designer of the interiors Peter Marino, its glass chandeliers and wainscot panelling evoke a stately, modern British mansion. Both the ballroom and its adjoining pre-function area can accommodate multiple motorcars each, which, along with the two dedicated large elevators, makes the space suitable for events like car shows and banquets of up to 450 seated guests. Private access points also allow discreet arrival for VIPs.

Wellington Room

Refined • Intimate

Adjacent to the St. George Ballroom, the Wellington Room is ideal for smaller gatherings.

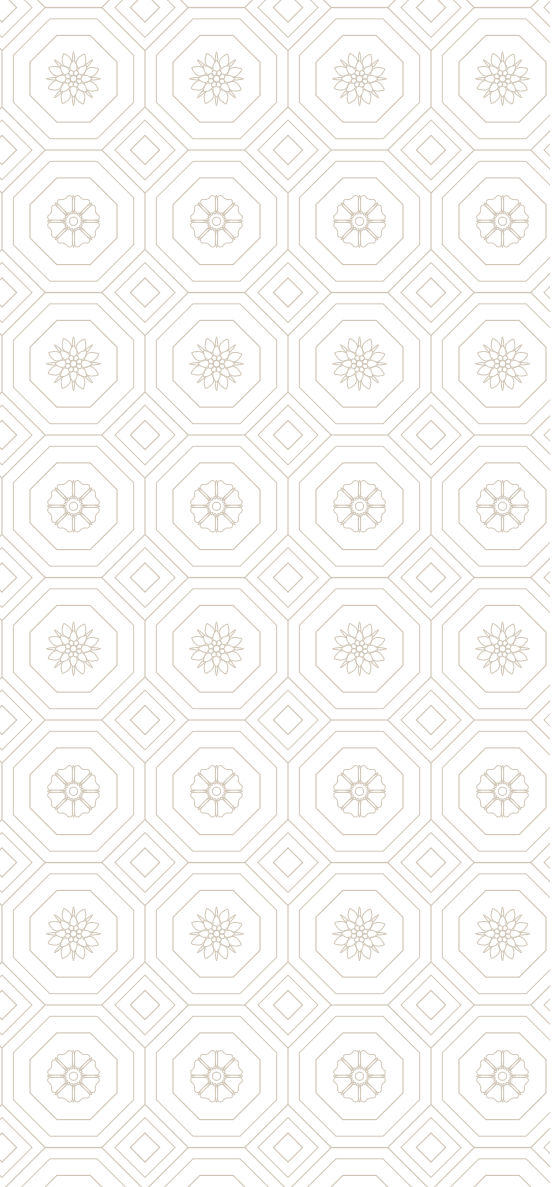
Its 5-metre (16-foot) ceiling and ambient light fixtures create a fresh, airy atmosphere for business meetings or meals for up to 60 guests; a connecting pre-function space and staircase allow easy access to breakout rooms and other event venues.

Belgrave Room, Chester Room, Eaton Room, Sloane Room

Sophisticated • Adaptable

Configurable as separate spaces or paired, these four intimate meeting rooms offer refined, wood-panelled comfort. All are furnished with state-of-the-art AV equipment, including flatscreen displays and ceiling speakers for optimal videoconferencing, and can individually accommodate up to 20 guests.





Wilton Room

Private • Bespoke

This stylish, dedicated boardroom, which is equipped with top-of-the-line AV technology and easy access to breakout areas, is perfectly suited for intimate meetings of up to 12 guests.

The Grand Terrace Suite

Exclusive • Semi-alfresco

Featuring a spacious open-air terrace with panoramic views over Belgravia and Hyde Park, this opulent residential-style suite provides a superb setting for intimate gatherings. The Grand Terrace Suite, which also has its own kitchen and private elevator access, can accommodate 80 guests for cocktail receptions.

The Cinema

Relaxed • Stylish

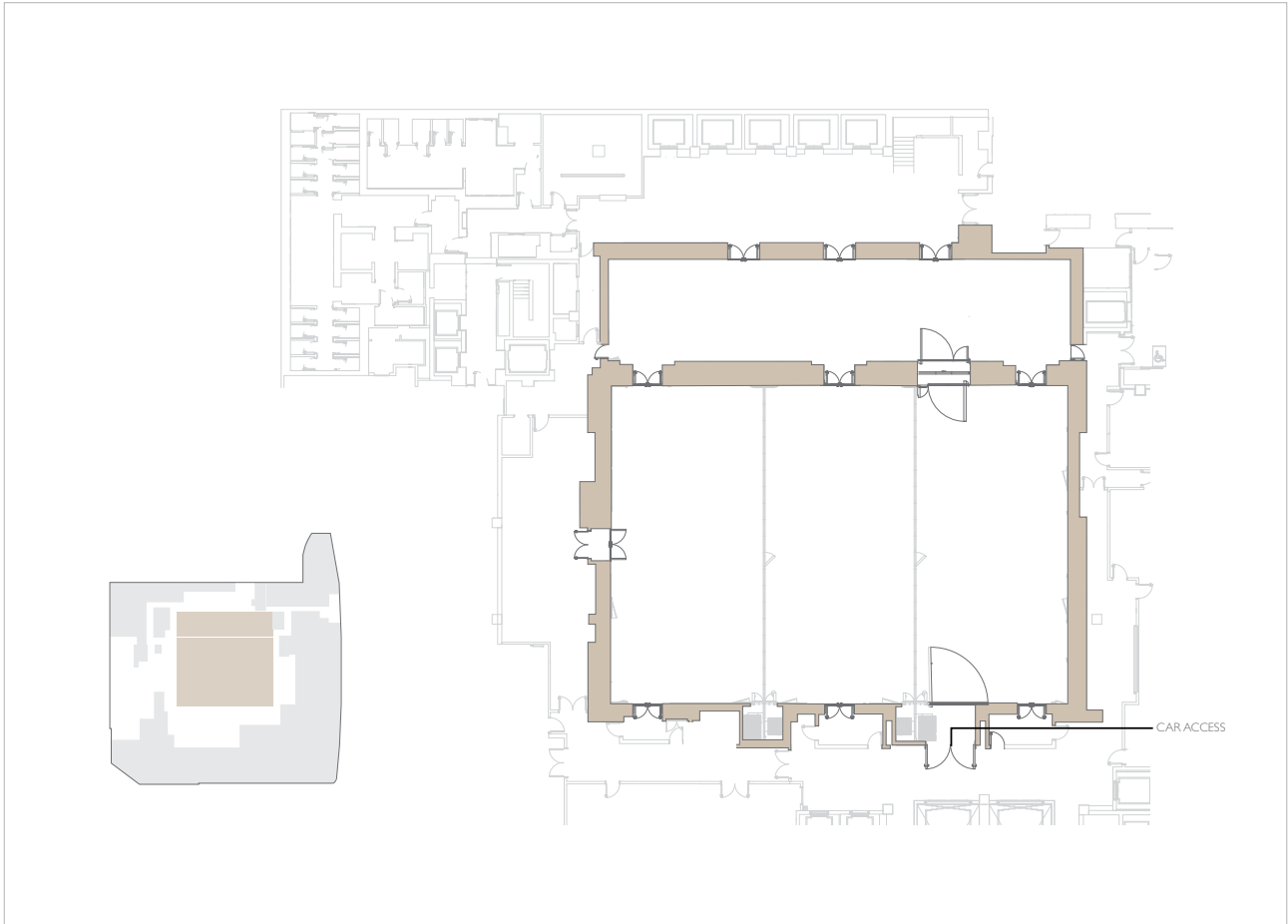
This plush private screening room provides an exclusive retreat for up to 15 guests. Cutting-edge video and sound technology, including Dolby surround-sound, a 4K, 3-chip DLP cinema projector, and a 200-inch micro-perforated viewing screen, provide an unparalleled viewing experience. Motorised reclining seats, dedicated restrooms, and adjoining refreshment areas offer enhanced comfort.









CAPACITY CHART

Event Space	Area			Capacity						
	Sq M	Sq Ft	Ceiling Height (mm)	Banquet	Cocktail	Theatre	Boardroom	Classroom	U Shape	Cabaret
Lower Level 4										
St George Ballroom	697	7492	6140	470	1000	750	92	390	99	400
St George Ballroom 1 or 3	234	2519	6140	150	300	231	62	96	66	120
St George Ballroom 2	232	2497	6140	160	300	238	62	136	66	128
St George Ballroom 1-2	466	5016	6140	300	600	455	62	297	75	240
Pre-Function St George Ballroom	217	2336	6000	-	450	-	-	-	-	-
Wellington Room	115	1238	5104	70	100	88	54	60	36	48
Pre-Function Wellington Room	33	355	2600	-	30	-	-	-	-	-
Lower Level 3										
Belgrave	26	280	2470	10	20	18	8	12	-	8
Chester	28	301	2470	10	20	18	8	12	-	8
Eaton	26	280	2470	10	20	18	8	12	-	8
Sloane	28	301	2470	10	20	18	8	12	-	8
Wilton	30	323	2600	-	-	-	12	-	-	8
2 Combined meeting rooms	-	-	-	24	50	42	22	24	15	18
The Cinema	65	700	3060	-	-	15	-	-	-	-
Pre-Function The Cinema	50	538	2450	-	-	15	-	-	-	-
6th Floor										
The Grand Terrace Suite	583	6275	-	50	80	40	30	-	-	-

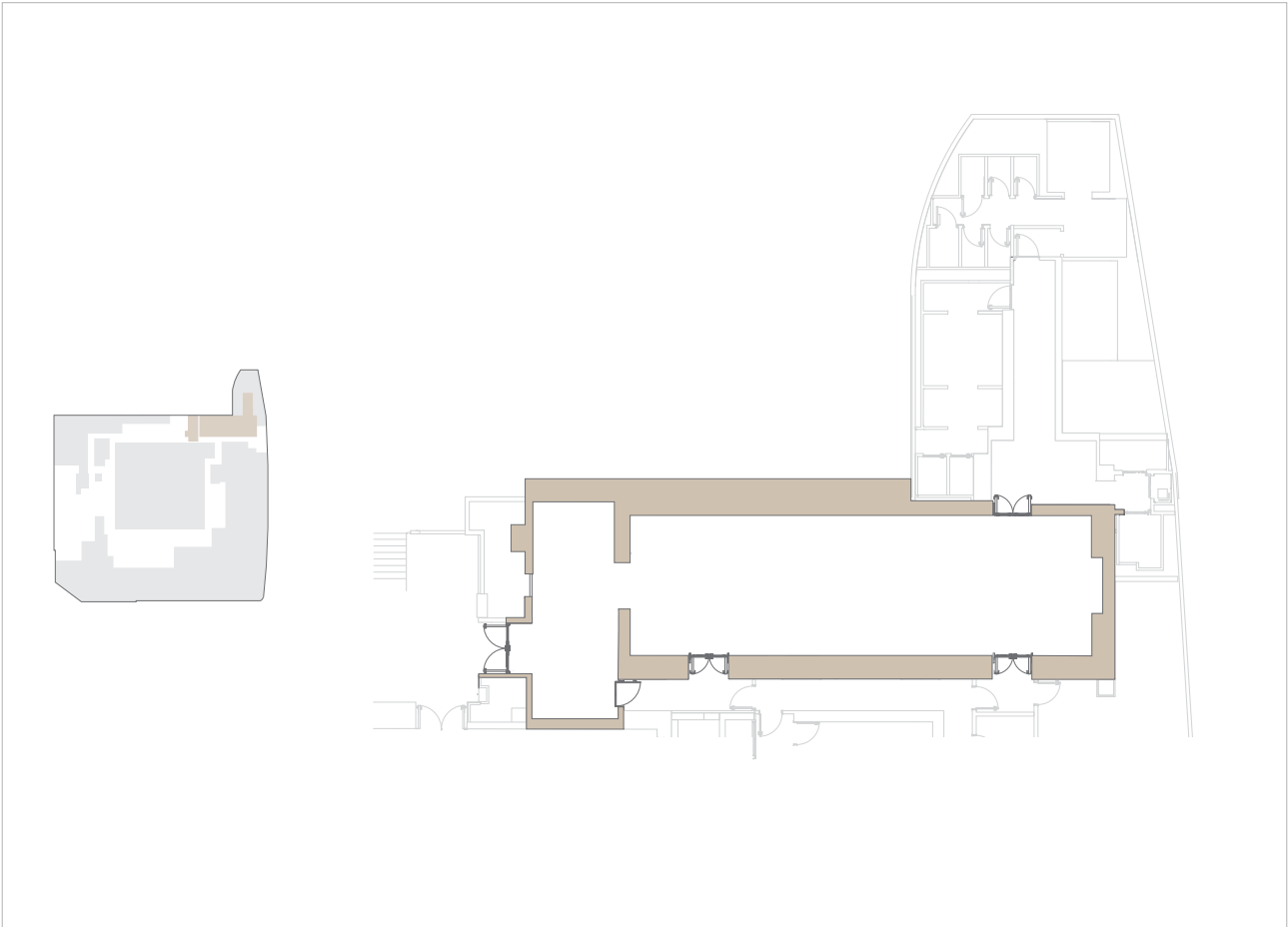










ST. GEORGE BALLROOM



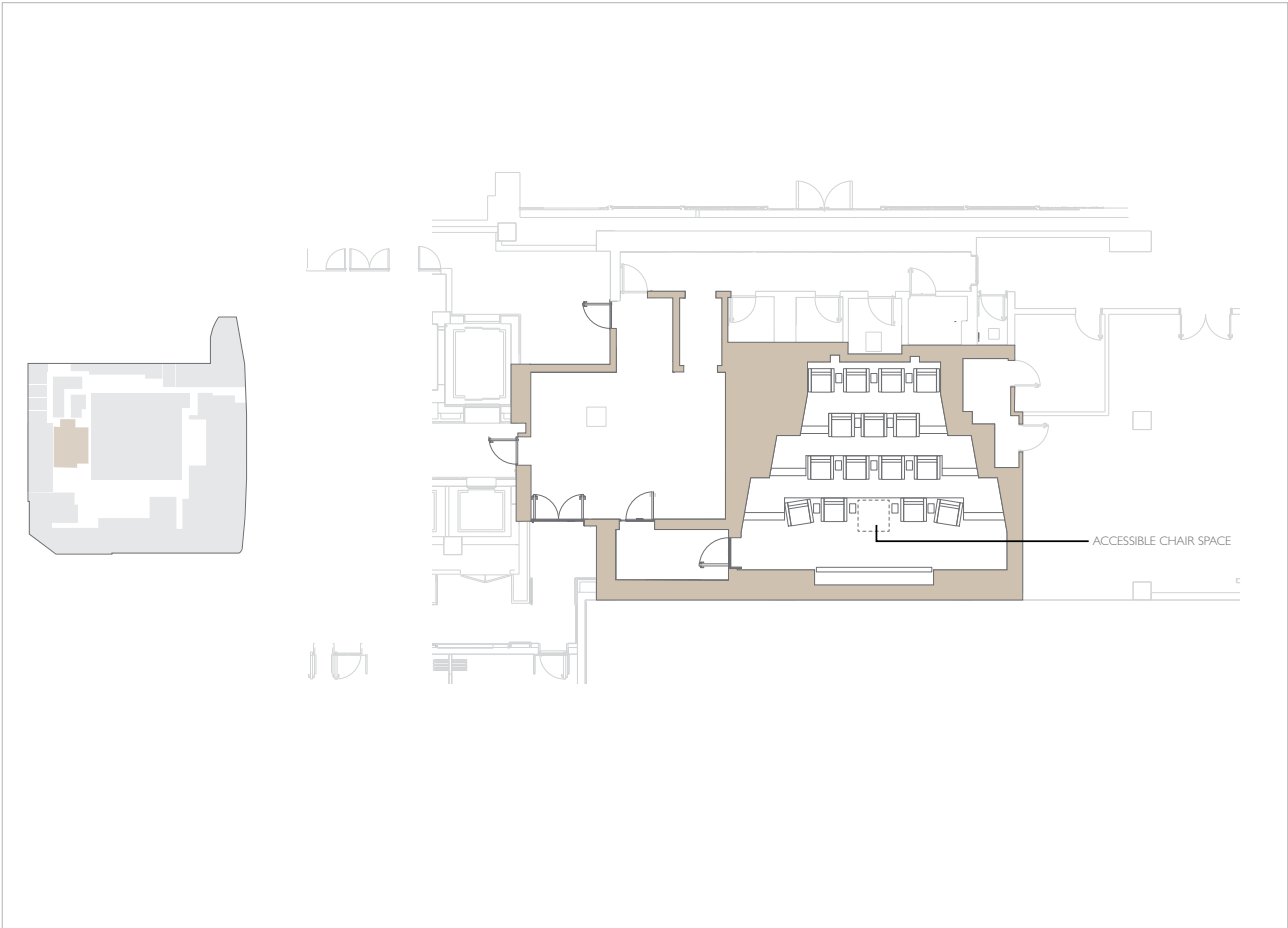
LOWER LEVEL FOUR								
ST. GEORGE BALLROOM	AREA 696 sq m 7492 sq ft	BANQUET 470	COCKTAIL 1000	THEATRE 750	CABARET 400	BOARDROOM 92	CLASSROOM 390	U-SHAPE 99
PRE-FUNCTION	217 sq m 2336 sq ft	N/A	450	N/A	N/A	N/A	N/A	N/A

WELLINGTON ROOM



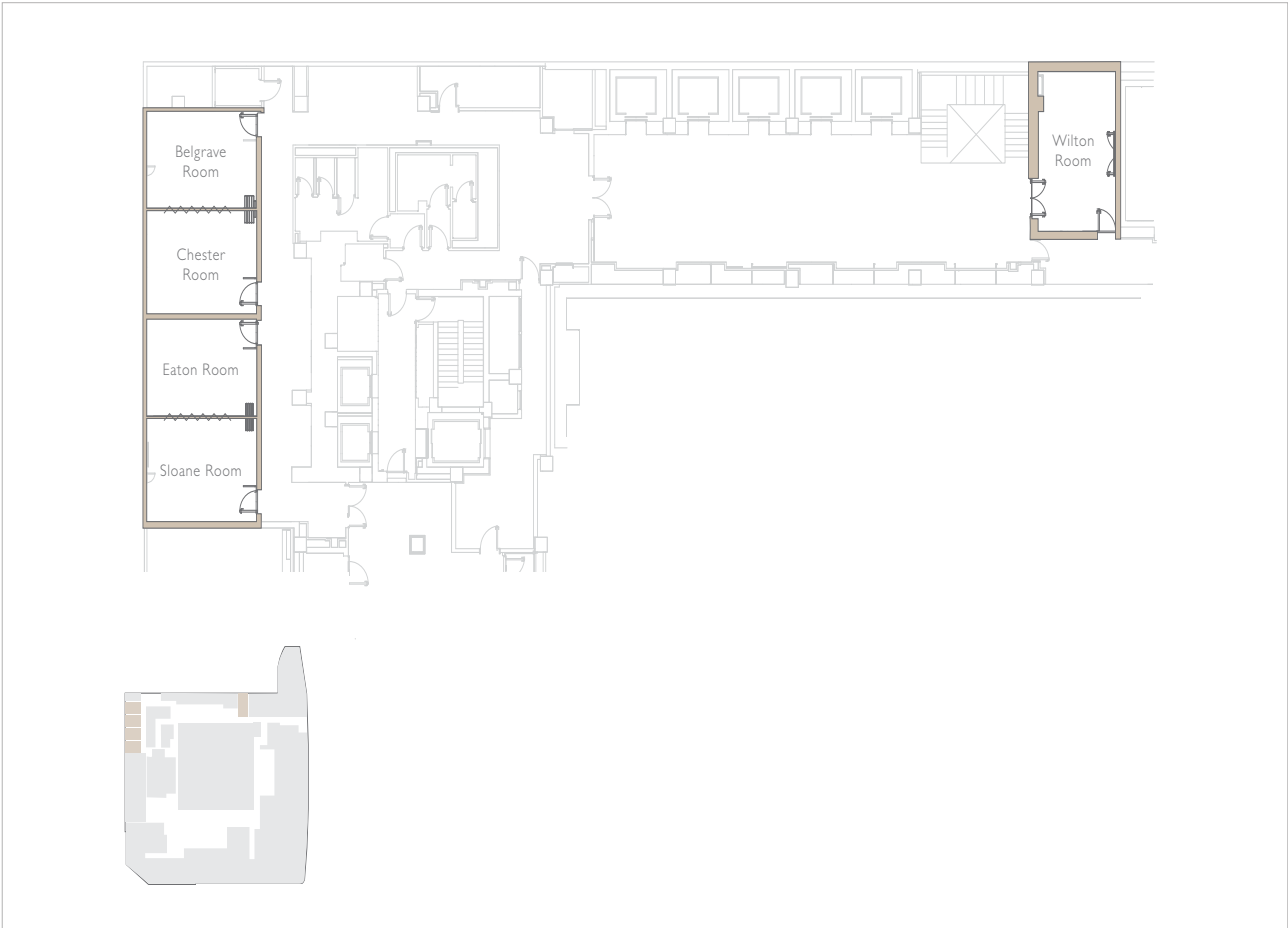
LOWER LEVEL FOUR								
WELLINGTON ROOM	AREA 115 sq m 1238 sq ft	BANQUET 70	COCKTAIL 100	THEATRE 88	CABARET 48	BOARDROOM 54	CLASSROOM 60	U-SHAPE 36
PRE-FUNCTION	33 sq m 355 sq ft	N/A	40	N/A	N/A	N/A	N/A	N/A









THE CINEMA



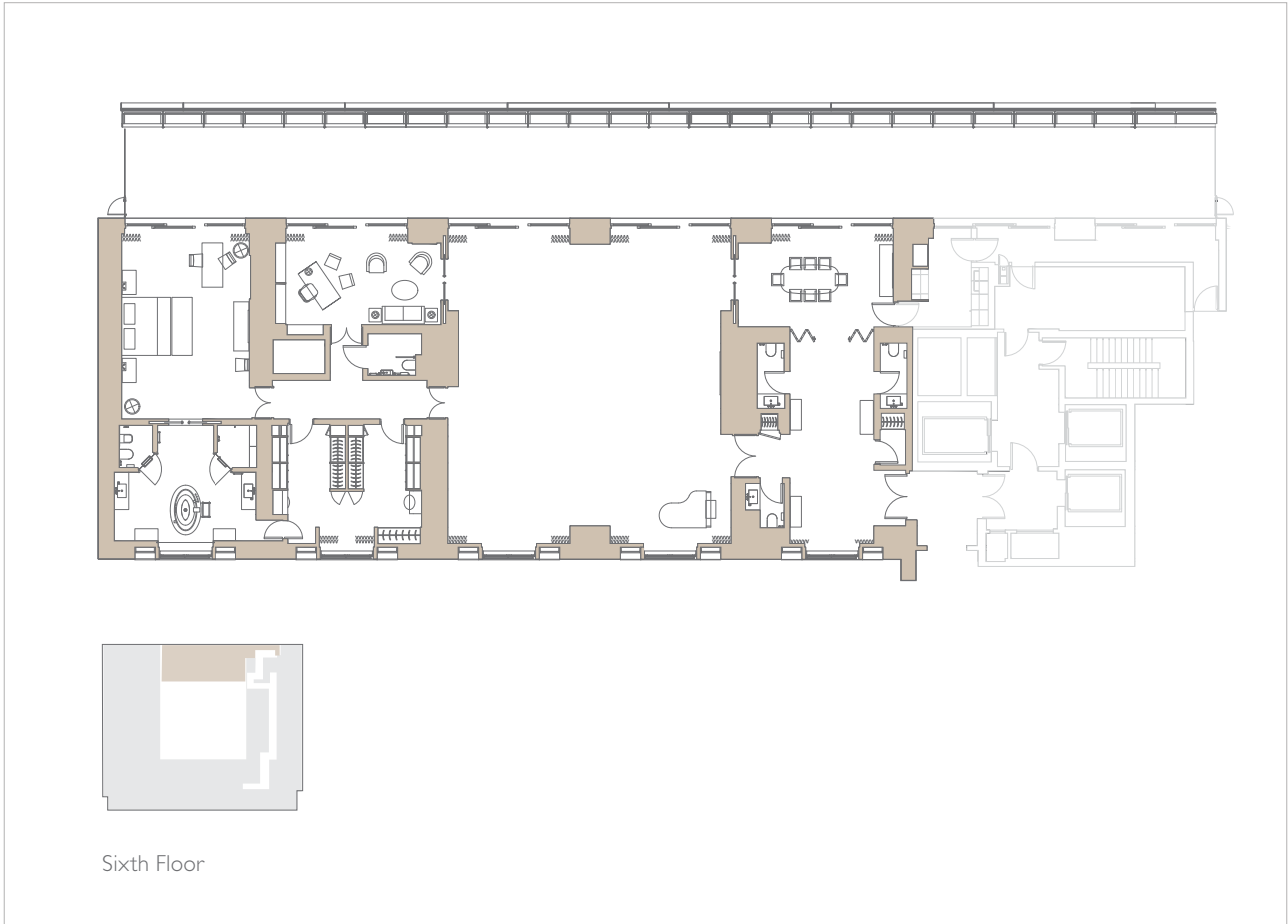
LOWER LEVEL THREE								
THE CINEMA	AREA 65 sq m 700 sq ft	BANQUET N/A	COCKTAIL N/A	THEATRE 15	CABARET N/A	BOARDROOM N/A	CLASSROOM N/A	U-SHAPE N/A

BELGRAVE, CHESTER, EATON, SLOANE & WILTON ROOMS



LOWER LEVEL THREE								
	AREA	BANQUET	COCKTAIL	THEATRE	CABARET	BOARDROOM	CLASSROOM	U-SHAPE
BELGRAVE ROOM	26 sq m 280 sq ft	10	20	18	8	8	12	15
CHESTER ROOM	28 sq m 301 sq ft	10	20	18	8	8	12	15
EATON ROOM	26 sq m 280 sq ft	10	20	18	8	8	12	15
SLOANE ROOM	28 sq m 301 sq ft	10	20	18	8	8	12	15
WILTON ROOM	30 sq m 323 sq ft	N/A	N/A	N/A	N/A	8	N/A	N/A

THE GRAND TERRACE SUITE



Sixth Floor

LOWER LEVEL SIX

THE GRAND TERRACE SUITE



AREA
583 sq m
6275 sq ft



BANQUET
50



COCKTAIL
80



THEATRE
40



CABARET
40



BOARDROOM
30



CLASSROOM
N/A



U-SHAPE
N/A